

## VENUE RIDER REITHALLE

### Concert

07.08.2024

#### CONTACT

**Technical Director**  
Karsten Mayer

+41 61 666 60 17  
[k.mayer@kaserne-basel.ch](mailto:k.mayer@kaserne-basel.ch)

**Production Manager**  
Sabrina Stoffel

+41 61 666 60 14  
[s.stoffel@kaserne-basel.ch](mailto:s.stoffel@kaserne-basel.ch)

#### STAGE

Width: 14m/46ft  
Depth: 8 m / 26.3 ft  
Height: 0.9m /3ft (clearance to truss: 5.9 m / 19.3 ft)

#### DRESSING ROOM

1 x Floor 37.3m2 (Below the Stage)

Each well equipped with:

1 x European-Style Toilet

2 x Showers with Warm Water

Chairs, Couches, Tables, floor length mirrors, a fridge and catering equipment.

There is also a 1 x Front-Loading Washer, 1 x Front-Loading Dryer and an iron available.

If there is a need for an extra room, we could reserve a room above the stage. But it doesn't have all the things, that the dressing room has, and it can get a bit noisy.

#### PARKING

For unloading you can drive on to the Kasernen-Areal via Kasernenstrasse.

Unfortunately, parking is prohibited on the Kasernen-Areal. Please let us know if you arrive with a transporter. We could reserve a parking space close to the Kaserne. We need the length of the car 48h before arrival.

Normal-sized cars can be parked either at the hotel or at the car park near by the Kaserne: [here](#).

Or you could buy a visitor [parking card](#).

**We have a noise limit of 100 dbA/hour at the loudest spot in the audience and are obliged to record sound level measurements during the whole performance!**

## SOUND

### PA

- 4x d&b V8 and 2 x d&b V12 per side flown
- 8x d&b V-sub in array
- 2x d&b C6 infills

### FOH

- 1x Yamaha CL5

### MONITORS

- |           |                |
|-----------|----------------|
|           | 1x Yamaha CL3  |
| wedges    | 8x d&b M4      |
|           | 6x d&b C6 mon  |
| drumfill  | 1x d&b C7 / C6 |
| sidefills | 2x d&b F2 / B1 |

### MICROPHONES

- 2x akg d112
- 1x shure beta 52
- 1x shure beta 91
- 1x evre20
- 8x shure sm 57
- 2x shure beta 57
- 8x shure sm 58
- 7x shure beta 58
- 7x akg c 451
- 2x akg c 1000 s
- 2x akg c 3000 b
- 2x sennheiser md421
- 4x sennheiser e604
- 4x sennheiser e906
- 6x sennheisere908(2xe908b/2xe908d/2xe908t)
- 5x emo passive di
- 2x palmer passive di
- 10x bss active di
- 2x dpa headsets 4088 F
- 4x dpa headsets 4066
- 2x dpa 4061-BM

### DJ-MIXER

- upon consultation:
- 1x 1x Allen & Heath Xone:62
- 1x 1x Allen & Heath Xone:92
- 1x 1x Allen & Heath Xone:96
- 1x 1x Pioneer DJM900 NXS2
- 1x 1x Pioneer DJM 800
- 1x 1x Rane 57

## CD PLAYER

2x Pioneer CDJ 3000  
2x Pioneer CDJ 2000 NXS2

## TURNTABLES

3x Technics SL 1210 MK2  
2x Technics SL 1210 MK5

## UHF

8x shure axient digital  
with 8 x SM 58; or 4x Beta 87° and 4xKMS 9 Capsules

## TECH QUESTIONS:

Töre Cagli  
Andi Döbeli  
Jaime Fernandez  
Robyn Trachsel

+41 61 666 60 05  
[ton@kaserne-basel.ch](mailto:ton@kaserne-basel.ch)

## LIGHT

### CONSOLE

- 1x Tracking Console MA Lighting GrandMA3 light
- 1x Tracking Console MA Lighting GrandMA2 light

### DIMMER

- 240x Dimmer ETC Transtechnik FDX2000 DP90 2.5kVA
- 6x Dimmer ETC Transtechnik FDX2000 DP90 5kVA

### POWER

- 1x CEE63 Stageright/Jardin
- 1x CEE32 Stageright/Jardin

### SPOTLIGHTS

- 12x Profiler 25°-50° 750W ETC Source Four Zoom
- 2x 4-Lite Blinder

### INTELLIGENT SPOTLIGHTS

- 6x Movinglight Wash LED RGBW High End Solarpix 7
- 8x Movinglight LED Profile High End Sola Theatre Frame
- 8x Movinglight Beam ROBE Mini Pointe
- 24x Movinglight Wash/Beam LED RGBW Clay Paky MiniB
- 8x Moving LED Bar GLP Impression X4bar 20
- 3x Stroboskop Martin Atomic LED 3000
- 12x LED Profiler ETC S4 Lustr 4 - 25°-50° ETC

### STANDS

- 8x Floorstands selfbuilt 40x20x2cm

### STAGE EFFECTS

- 1x MDG ATMe
- 2x Smoke Factory TourHazer II
- 2x Fan BIONAIRE
- 1x Mirror Ball Showtec 50cm with motor
- 2x Mirror Ball Showtec 40cm with motor
- 1x Mirror Ball Showtec 15cm with motor

### TECH QUESTIONS

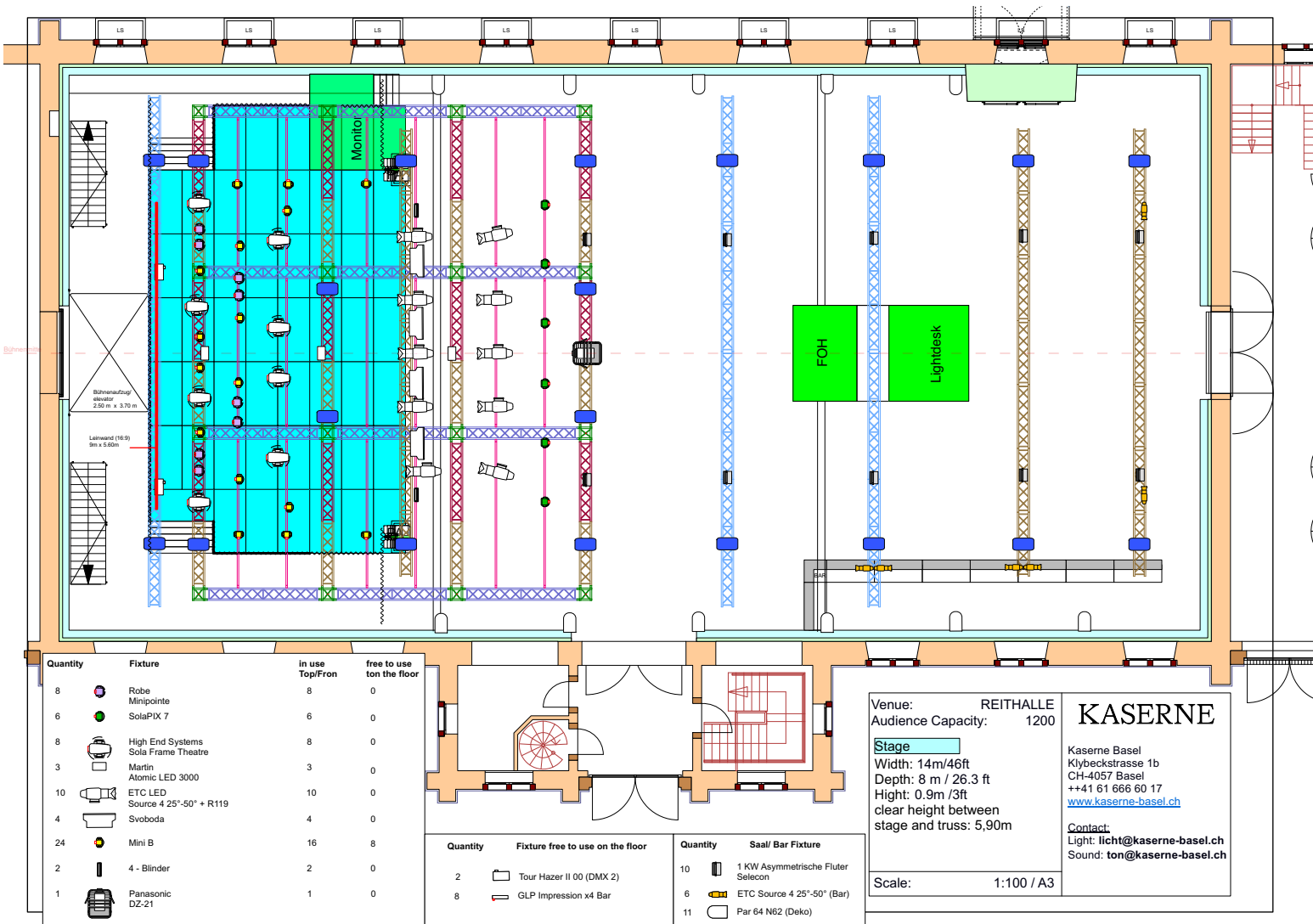
Joshua Bauer  
Laura Sanchez

+41 61 666 60 05  
[licht@kaserne-basel.ch](mailto:licht@kaserne-basel.ch)

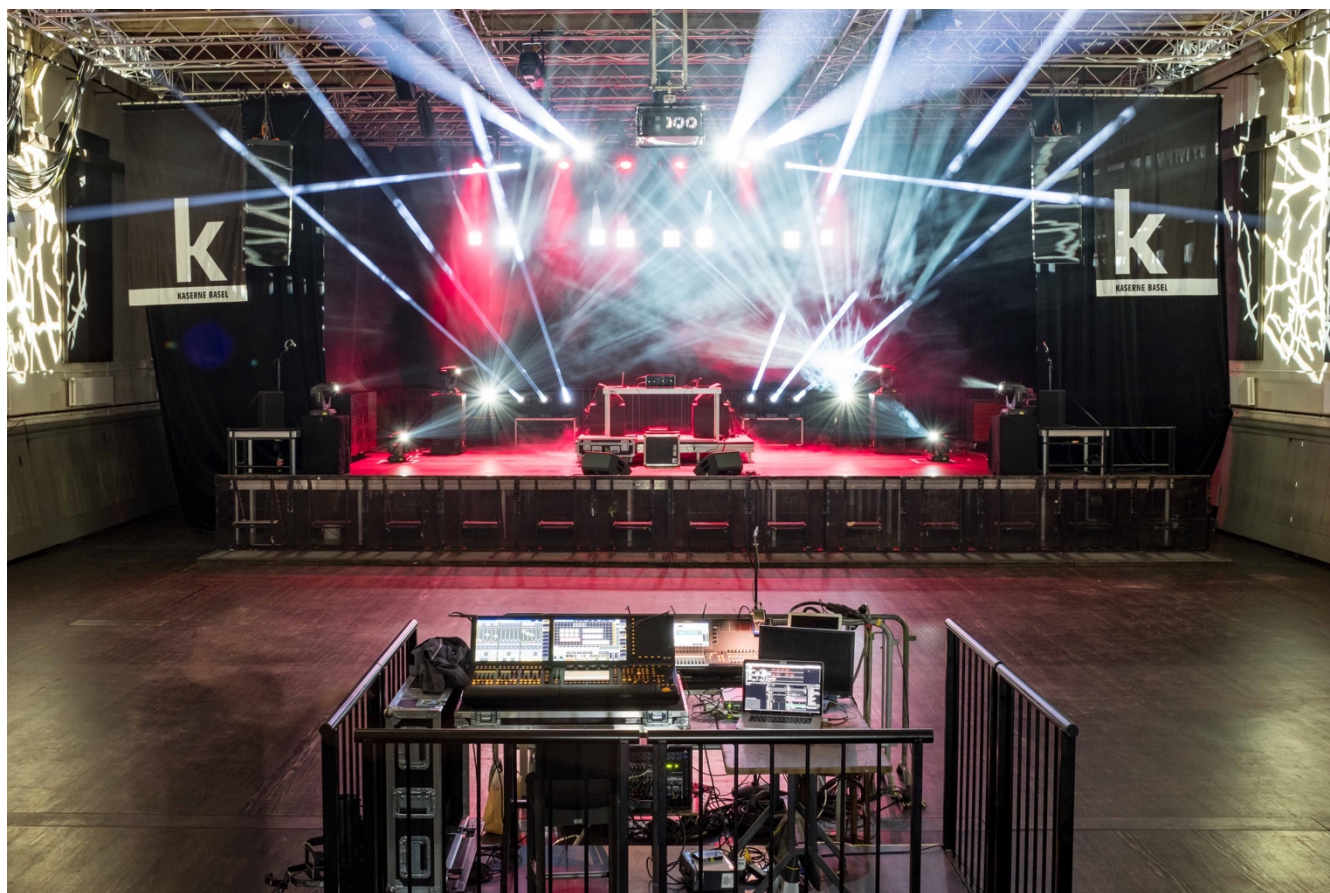
Video

- PROJECTOR
- SCREEN
- 1x Panasonic DZ21
- 1x Gerriets Show 9m x 5.6m (16:9)

Ground Plan  
standard light setup









## NIGHTLINER INFO

### Parking:

Klingentalgraben, 4057 Basel (47°33'49.6"N / 7°35'25.0"E)

Arrival via Klybeckstrasse



### Power:

At the back of the Kaserne Basel it has a small staircase. To the right of the stairs is a wooden board leaning against the wall. Behind it you will find the power connection:

