

VENUE RIDER ROSSSTALL 1

THEATER

19.09.2024

CONTACT

Technical Director

Karsten Mayer

+41 61 666 60 17

k.mayer@kaserne-basel.ch

Production Manager

Petra Barcal

+41 61 666 60 01

p.barcal@kaserne-basel.ch

We have a noise limit of 100 dbA/hour at the loudest spot in the audience and are obliged to record sound level measurements during the whole performance!

STAGE

Width: 7.8 m / 25.5 ft

Depth with grandstand: 12m / 39.3 ft (black or white dancefloor)

Depth Empty: 30 m / 98.4 ft (wooden floor)

Height: 0 m/0 ft (Clearance to lights: 3.40 m / 11.2 ft)

DRESSING ROOMS

1 x Floor 37.3m² (Below the Stage)

Each well equipped with:

1 x European-Style Toilet

2 x Showers with Warm Water

Chairs, Couches, Tables, floor length mirrors, a fridge and catering equipment.

There is also a 1 x Front-Loading Washer, 1 x Front-Loading Dryer and an iron available.

If there is a need for an extra room, we could reserve a room above the stage. But it doesn't have all the things, that the dressing room has, and it can get a bit noisy.

PARKING

For unloading you can drive on to the Kasernen-Areal via Kasernenstrasse.

Unfortunately, parking is prohibited on the Kasernen-Areal. Please let us know if you arrive with a transporter. We could reserve a parking space close to the Kaserne. We need the length of the car 48h before arrival.

Normal-sized cars can be parked either at the hotel or at the car park near by the Kaserne: [here](#).

Or you could buy a visitor [parking card](#).

SOUND

PA

- 4x d&b AL60
- 2x d&b AL90
- 1x Center d&b ALi90
- 2x d&b V- Subs
- 4x d&b M4 (no flying brackets)

All Tops Single-Amplified with d&b D80

All Subs Single-Amplified with d&b D80

FOH

upon consultation

1x Yamaha CL3 or

1x Yamaha CL1

MICROPHONES

upon consultation

UHF

- 4x shure axient digital with 8 x SM58

TECH

QUESTIONS:

Töre Cagli

Andi Döbeli

Jaime Fernandez

Robyn Trachsel

+41 61 666 60 05

ton@kaserne-basel.ch

LIGHTS

- CONSOLE
- 1x Tracking Console MA Lighting GrandMA2 light or upon consultation:
 - 1x Tracking Console MA Lighting GrandMA2 light
 - 1x ETC ion + 2 x 10 Faderwing
 - 1x ETC GIO @5
 - 1x ETC EOS FaderWing 20 Standard

DIMMER

- 96x Dimmer ETC Transtechnik FDX2000 DP90 2.5kVA

SPOTLIGHTS

- 12x LED Profiler ETC S4 Lustr 2 - 25°-50° ETC
- 10x Profiler 25°-50° 750W ETC Source Four Zoom
- 12x PC/Fresnel 1kW Robert Juliat 306 HPC
- 36 x PAR ETC 575W Source Four PAR, CP60/61/62/

INTELLIGENT SPOTLIGHTS

- 8x Movinglight Spot MSR claypaky Alpha Spot HPE700
- 4x Movinglight Beam ROBE Mini Point
- 6x Movinglight Wash LED RGBW High End Solarpix 7
- 12x Movinglight Wash/Beam LED RGBW Clay Paky MiniB
- 8x LED Bar Tilt GLP impression X4Bar 10
- 1x Stroboskop Martin Atomic LED 3000

STAGE EFFECTS

- 1x Haze Machine DMX Le Maitre M.V.S.
- 1x Fog Machine Data2 Smoke Factory

TECH QUESTIONS

Joshua Bauer
Laura Sanchez

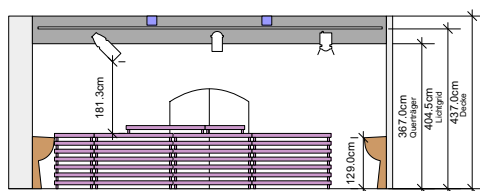
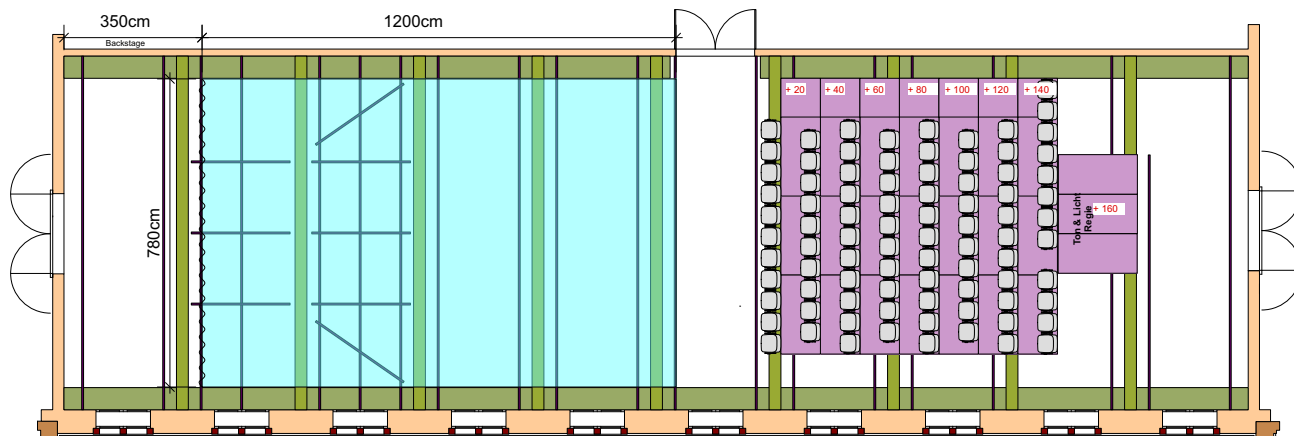
+41 61 666 60 05
licht@kaserne-basel.ch

VIDEO

PROJECTOR SCREEN

- upon consultation
upon consultation:
- 1x Opera 580 x 380 Gerriets matt
 - 1x Show 580 x 380 Gerriets anthracite
 - 1x different screens Stumpfl rear / front

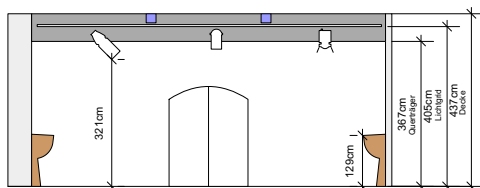
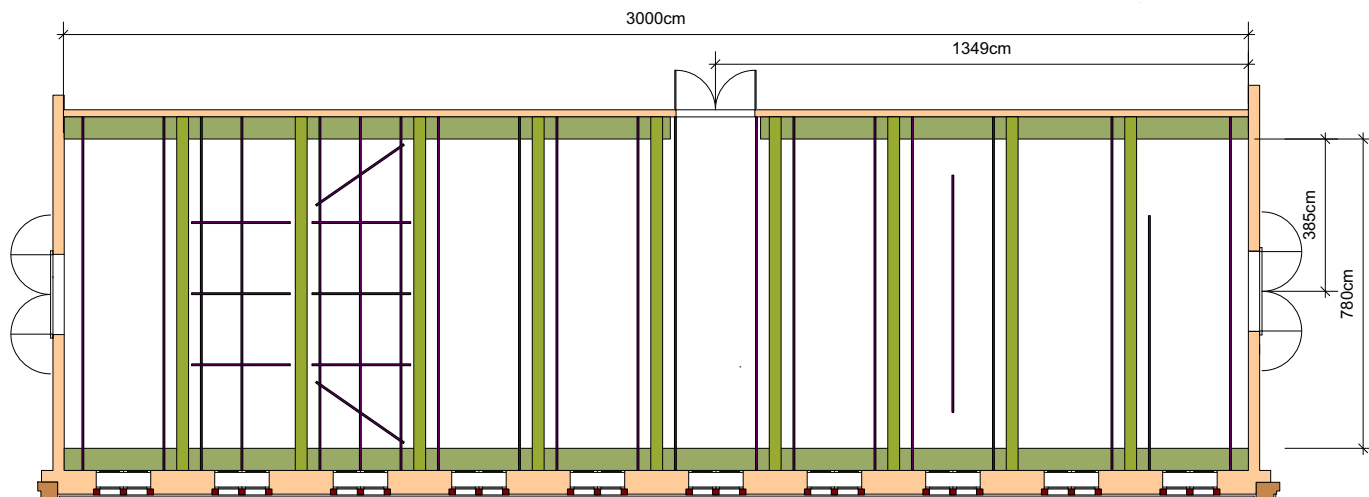
Ground Plan
 With grandstand



Venue:	ROSSSTALL 1	KASERNE
Audience Capacity:	84	
Stage:		Kaserne Basel Klybeckstrasse 1b CH-4057 Basel ++41 61 666 60 17 www.kaserne-basel.ch Contact: Light: licht@kaserne-basel.ch Sound: ton@kaserne-basel.ch
Width:	7,8 m	
Depth:	12 m	
Height:	0 m	
Scale:	1:100 / A3	

Ground Plan

empty



Venue:	ROSSSTALL 1	KASERNE
		Kaserne Basel Klybeckstrasse 1b CH-4057 Basel ++41 61 666 60 17 www.kaserne-basel.ch
		Contact: Light: licht@kaserne-basel.ch Sound: ton@kaserne-basel.ch
Scale:	1:100 / A3	